



GHOSTLY INTERNATIONAL

GI-226

## Lord RAJA *A Contant Moth*

### TRACKLIST

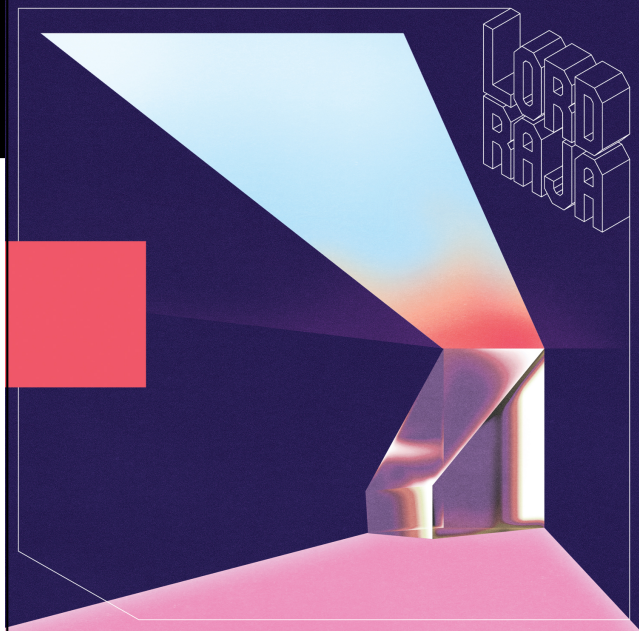
- |                              |                            |
|------------------------------|----------------------------|
| 1. Yelleo E                  | 7. Skyre                   |
| 2. Van Go feat. Jeremiah Jae | 8. Throw Them Out (System) |
| 3. Pistol Refix              | 9. De Lia Lu Lu            |
| 4. Darwin                    | 10. Red Sun                |
| 5. TV Talk                   | 11. Black Top              |
| 6. Gottfried Semper          | 12. Golden Gravity Birds   |

### RELEASE BIO

Welcome to the world of Lord RAJA, a strange, sometimes perilous alternate dimension with beauty and decay in equal measure. It's a world built on the beat-centric music which flows through New York native Chester Raj Anand's stream of consciousness; here, half-remembered hip-hop classics are spliced into '90s IDM, ambient, footwork, and experimental sound design. Our latest dispatch from Lord RAJA's uncanny realm is the impulsive and unpredictable *A Constant Moth* LP, 12 hyper-detailed scenes ripped from the surreal mayhem on play in the mind of this talented young producer.

After releasing his lush *Rubies* EP with Ghostly in the spring of 2013, Lord RAJA has travelled further down the wormhole opened by J Dilla, Dabrye, and Aphex Twin, seeking a place to call his own. His debut album, *A Constant Moth*, is that cosmic destination, and has been carved out and personalized with a strong sense of texture, rhythm, and spaciousness. Productions like "Skyre" and "Pistol Refix" put forth heavily smashing beats as the foundation of Lord RAJA's palace, while opulent dancefloor heaters "Throw Them Out (System)" and "De Lia Lu Lu" build glittering pillars from juke experiments and low-res electroisms, respectively. Warp affiliate Jeremiah Jae graces the atonal thump of "Van Go" like a knight paying his respects in RAJA's court, and beatless synth composition "Gottfried Semper" billows in the astral landscape's warm breeze. As far as we can discern, *A Constant Moth* is the most eclectic and fully realized depiction of Lord RAJA's far-off galaxy to date.

But these 12 tracks are indeed just a glimpse into the sheer scope of the East Coast artist's musical vision, as *A Constant Moth* boasts a brisk 35-minute runtime that'll leave you itching to jump into its dizzying barrage again. From the opening moments of "Yelleo E"—with its jittery rhythmic workout and whirlpool atmospheres—to the warbling radio transmissions which close out "Golden Gravity Birds", Lord RAJA's debut LP delivers an intricate portrait of a burgeoning new producer. *A Constant Moth* is one of those rare records that sounds precociously self-assured while also hinting at a vast sonic universe that he's only begun to explore.



### RELEASE INFO

Catalogue Number: GI-220

Format: CD, LP

Release Date: December 2nd, 2014 (North America)

December 1st, 2014 (Worldwide)

Export Restrictions: None

UPC-LP: 804297822617

UPC-CD: 804297822624

Genre: Electronic, Hip-hop

Vinyl is not returnable

Box Lot: LP-10 CD-35

### POINTS OF INTEREST

- First full length for Ghostly
- Vocals on track 2 feature Warp artist Jeremiah Jae
- LP is packaged in 2-panel art sleeve on high quality paper; CD is packaged in 4 panel digipak.

### LABEL CONTACT

Ghostly International  
61 Greenpoint Ave. #506  
Brooklyn, NY 11222  
dado@ghostly.com  
www.ghostly.com

LP UPC



8 04297 82261 7

CD UPC



8 04297 82262 4



SC DISTRIBUTION

Exclusively distributed by SC Distribution / Phone: (812) 335-1572 / Fax: (888) 678-0167

US domestic sales contact: Shelly Westerhausen / shelly@scdistribution.com / International sales contact: Kraegan Graves / kraegan@scdistribution.com